

Mesh Router

MR2200ac



Embrace a whole Wi-Fi coverage in your home and office with the intelligent Synology Mesh Router MR2200ac. Designed with Tri-Band and MU-MIMO technology, MR2200ac makes sure your devices are on the fastest bandwidth dedicated to an optimized performance while keeping multiple devices reliably connected without any delay. Besides, you can enjoy the best Wi-Fi seamless roaming with a single Wi-Fi name among your modular mesh system. Safe Access provides easy-to-use parental management while keeping away any malicious intrusions. Synology MR2200ac is backed by Synology's 2-year limited warranty.

Brilliant mesh system ready for smart home

To build a mesh system, simply extend an **existing RT2600ac** Wi-Fi network with an additional MR2200ac or integrate **multiple MR2200ac mesh routers**. The **single Wi-Fi name** you set allows you to roam from room to room: you can now stream a movie without the signal dropping and enjoy an extraordinary seamless roaming experience. With its **Tri-band** technology on one 2.4 GHz band and two 5 GHz bands featuring **MU-MIMO** support, MR2200ac establishes three separated connections and allows accommodation to extra devices to achieve maximum Wi-Fi speeds and reduces congestion.

Smart Connect ensures devices are automatically connected to the most suitable band to reach the optimal connection performance - this greatly reduces any delays and interruption. **Guest network** provides a secure connection and gives public and temporary visitors only limited permission - this keeps the primary network properly functioning and well protected. You can also set up a welcome portal for everyone connecting to your guest Wi-Fi. Tools including **scheduling**, **auto password change**, and **MAC address filtering** also help prevent unwanted connections.

With MR2200ac supporting **Wi-Fi Protected Setup (WPS)**, simply press one button to allow your Wi-Fi connection to be automatically configured and enjoy a hassle-free setup. Coupled with the attached **USB 3.0 port** available for extra storage devices, MR2200ac can easily become your private server that provides effortless access and file sharing.

Highlights

- Dedicated Tri-band 2.13 Gbps (400+867+867 Mbps) bandwidth optimized for performance and reliability
- Easy setup and remote management from web client or mobile app
- Comprehensive parental management and easy-to-use interface with Safe Access
- Single Wi-Fi name and seamless roaming with 802.11 k/v/r support
- Create advanced VPNs with WebVPN, Synology SSL VPN, and SSTP VPN capability
- Guest Wi-Fi with features such as guest portals, scheduling, and password rotation
- Powerful add-on packages to enhance security, file sharing, and additional functionality

Revolutionary software experience

Built with security and stability in mind, **Synology Router Manager (SRM)** allows for friendly management on your device. The familiar, desktop-like interface makes it **easy to use**, and also comes with capable network tools that users can quickly setup, customize or efficiently troubleshoot issues.

Secure and convenient access options are built into SRM. Easily manage your network with multiple access methods remotely with **QuickConnect**, **DDNS**, or with **DS router** on mobile devices. Optional two-step authentication ensures that no one but you can make changes to your network.

Redefine parental control

In view of limiting Internet usage and protecting children from online dangers, the add on package **Safe Access** allows you to easily understand the Internet habits of children at different ages.

- Profile management: Set rules by users instead of devices with **User Profiles** to streamline your management. Your **Local Network** and **Guest Wi-Fi** can also be specified in one group.
- Time management: **Internet schedules** and **Time Quota** help you encourage children to use time wisely, and learn to be more organized and productive with limited time online.
- Web-filtering: The constantly updated block categories help you filter out inappropriate content and safeguard your children. Besides, you can set up additional **whitelists** or **blacklists** so children can only visit or be blocked from specific sites.
- Website history: Easily keep track of the access history of each profile and learn more details about your children's online activities.

Advanced VPN capabilities

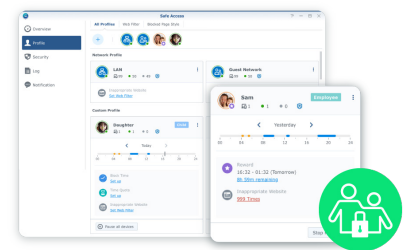
With the **VPN Plus Server**¹ add-on package, you can transform your Synology Mesh Router MR2200ac into a powerful yet intuitive comprehensive VPN solution. VPN Plus Server provides security and convenience to your remote workforce when you need remote access to internal network resources. **WebVPN** allows client-free VPN for secured, remote access to internal websites using only a browser without any software installation or configuration required on clients. **Synology SSL VPN** is available with dedicated clients on both desktop and mobile platforms. **Remote Desktop** allows employees to easily and securely access resources on their PCs within the internal network through a web browser. VPN Plus Server also supports hosting standard **SSTP**, **PPTP**, **OpenVPN**, and **L2TP over IPSec** VPN options.

Moreover, **Site-to-Site VPN**² increases business productivity by boosting cross-premises file transfer speeds for companies with branches in multiple locations, allowing them to share resources across different networks through encrypted tunnels without the need for employees to configure VPN settings on individual computers.



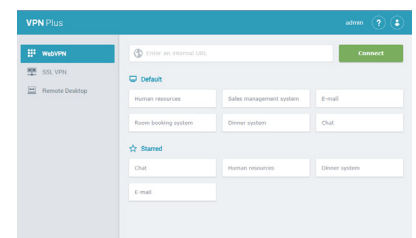
Extraordinary Wi-Fi experience

Seamlessly roam on the Internet with a single Wi-Fi name and secure the best connectivity with Smart Connect



Profile management

Customize profiles with Safe Access and set Internet schedules, time quota, and web filters to safeguard children from inappropriate websites



VPN Plus

Complete VPN solution supporting client-free WebVPN, powerful and secure Synology SSL VPN in addition to standard VPN protocols and powerful management tools

Solid network foundation

Synology MR2200ac offers advanced security features that help make your network more resilient against network intrusions. SRM's built-in **Security Advisor** will analyze and remind you of security issues in your configuration, allowing you to easily setup security configurations. In addition to the built-in **IPv4 and IPv6 firewalls**, the **DNS/IP Threat Intelligence Database** of **Safe Access** also helps prevent malicious attacks from infiltrating and compromising your devices.

Comprehensive network management

To deal with heavy network traffic from multiple applications, SRM offers well designed traffic management solutions.

Traffic control keeps you updated in the real-time with detailed information of each application and device, while also allowing you to define the priority of services with **application QoS** and the guaranteed bandwidth allocation of devices. Thanks to the automatically generated **Network Traffic Report**, you can easily track the detailed event logs and recent traffic trends. The report duration can be defined from daily to annual according to your needs, flexibly assisting you in network tuning on specific applications and each device.

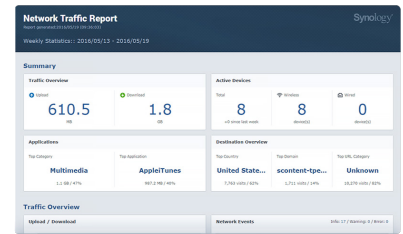
Comprehensive file sharing, management, and connectivity

Comprehensive sharing capabilities together with the add-on package **Cloud Station Server** allows you to create your personal cloud storage with ease. Easily backup, share, and sync your files with MR2200ac from multiple devices. With a capable **Media Server** package, your MR2200ac can serve as a media server to any smart television set, networked set-top-box, or the latest gaming consoles. **DNS server** also helps you find web pages, computers, or other network devices at ease by translating domain names into IP addresses.

Featuring a USB port, Synology MR2200ac can effortlessly transfer files from USB devices or other clients in the network. MR2200ac supports **Time Machine** backup with an attached storage device. You can also connect MR2200ac to your mobile devices, enable **USB tethering**, and allow MR2200ac to access the Internet via 3G/4G network.

Evolving Software and Platform

SRM and its ecosystem is constantly growing. Synology is dedicated to providing not just security updates but new features with core software improvements, additional add-on packages, and new supporting mobile applications. Stay up to date with our improvements on our website and via our newsletters!

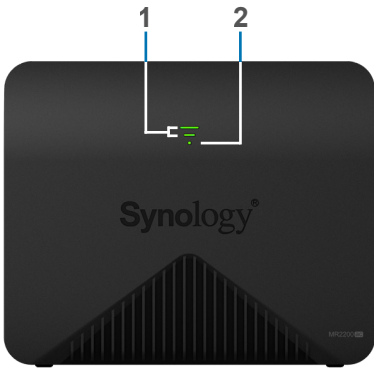


Traffic control and reporting

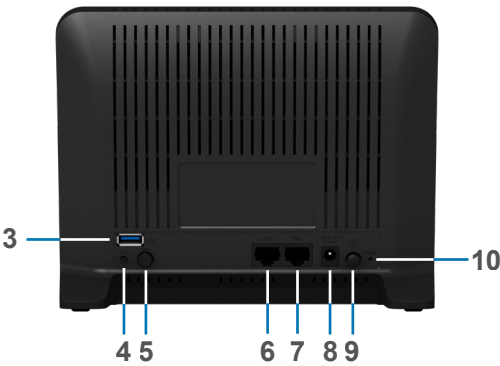
Monitor and fine-tune your network to perfection based on detailed reports generated by SRM

Hardware Overview

Front



Rear



| | | | | | | | |
|---|---------------------|----|------------------|---|--------------|---|------------|
| 1 | Wi-Fi indicator | 2 | Status indicator | 3 | USB 3.0 port | 4 | WPS button |
| 5 | Wi-Fi on/off button | 6 | LAN port | 7 | WAN port | 8 | Power port |
| 9 | Power button | 10 | Reset button | | | | |

Technical Specifications

Hardware

| | |
|----------------------------|--|
| CPU | Quad Core 717 MHz |
| Memory | DDR3 256 MB |
| Antenna type | 2T2R high-performance internal antenna (2.4 GHz / 5 GHz) |
| LAN Port | 1 x Gigabit |
| WAN Port | 1 x Gigabit |
| External port | USB 3.0 |
| Size (HxWxD) | 154 x 199 x 65 mm |
| AC input power voltage | 100V to 240V AC |
| Power frequency | 50 to 60Hz, single phase |
| Operating temperature | 5°C to 40°C (40°F - 104°F) |
| Storage temperature | -20°C to 60°C (-5°F to 140°F) |
| Relative humidity | 5% to 95% RH |
| Maximum operating altitude | 5,000 m (16,400 ft) |

Wireless

| | |
|--------------------------|--|
| Wireless standards | 802.11a/n/ac 5 GHz-1/ 5 GHz-2, 802.11b/g/n 2.4 GHz, simultaneous tri-band |
| Frequency and data rate | <ul style="list-style-type: none">2.4 GHz: 400 Mbps5 GHz-1: 867 Mbps5 GHz-2: 867 Mbps |
| Wireless security | WEP, WPA/WPA2-Personal, WPA/WPA2-Enterprise, Wi-Fi Protected Setup (WPS) 2.0, WPA3-Personal/Enterprise certified, Wi-Fi Enhanced Open certified |
| Seamless roaming | 802.11k/v/r standard support |
| Other wireless functions | <ul style="list-style-type: none">Smart Connect - 2.4 GHz and 5 GHz automatic band steering, Independent 2.4 GHz / 5 GHz Wi-Fi schedule On / OffGuest Network - Wi-Fi schedule On / Off |

Features

| | |
|-----------------------------|--|
| Operation Modes | <ul style="list-style-type: none">Wireless routerWireless AP |
| DHCP | Server, client, client list, address reservation |
| Quality of Service | Dedicated bandwidth management |
| Port forwarding | DMZ, UPnP |
| Traffic control | Per-device Internet ban, custom speed, traffic monitoring, domain history and advanced usage reporting |
| Network tools | Ping, Traceroute, Wake on LAN over QuickConnect |
| Security | IPv4, IPv6 Firewall / SPI firewall, auto block, denial of service (DoS) protection, VPN passthrough (PPTP, IPSec, L2TP), MAC address filter, website filter, IP block, Google Safe Browsing, Google/YouTube/Bing SafeSearch, server certificate, Security Advisor, two-factor authentication |
| VPN client | PPTP, OpenVPN™, L2TP over IPSec |
| IPv6 support | IPv6 DHCP server / client, DS-Lite, 6in4, 6to4, 6rd, Dual-Stack, DHCPv6-PD, IPv6 Relay, FLET's IPv6 |
| Backup solutions | Backup & restore SRM configuration, Time Machine support (with attached USB storage device) |
| Notifications | Email, SMS, push notifications (via DS router) |
| File Service | CIFS, AFP, FTP, WebDAV |
| FTP server | Bandwidth control for TCP connections, custom FTP passive port range, anonymous FTP, FTP SSL/TLS and SFTP protocols, transfer logs |
| iOS / Android™ applications | DS cloud, DS file, DS router, VPN Plus |
| Anywhere access | Synology QuickConnect, Dynamic DNS (DDNS) |
| Printer support | Maximum printer: 1, printing protocols: LPR, CIFS, IPP |
| Advanced functions | Policy route, static route, network address translation (NAT), SNMP, SSH, LAN / WLAN IGMP snooping, PPPoE relay |
| Supported clients | Windows 7 onward, Mac OS X® 10.11 onward |
| Supported browsers | Chrome®, Firefox®, Internet Explorer® 11 onwards, Safari® 11 onwards; Safari (iOS 11 onwards), Chrome (Android™ 6.0 onwards) |
| Language | English, Deutsch, Français, Italiano, Español, Dansk, Norsk, Svensk, Nederlands, Русский, Polski, Magyar, Português do Brasil, Português Europeu, Türkçe, Český, 日本語, 한국어, 繁體中文, 简体中文 |

Add-on Packages

| | |
|------------------------------|---|
| VPN Plus Server ¹ | Allows secure VPN access through a web browser or client. Supports various VPN services — WebVPN, Synology SSL VPN, SSTP, OpenVPN, L2TP over IPSec, and PPTP. Remote Desktop provides remote access within internal network through a web browser. Site-to-Site VPN ² provides companies to establish encrypted tunnels between the networks in multiple locations |
| Safe Access | Offers a simple interface to manage children's online access by creating different profiles and imposing Internet schedules, time quota, and web filters. Delivers solid network protection against intrusions with the DNS-based web filter with a built-in database and Google SafeSearch™ |
| Cloud Station Server | Sync data from multiple platforms, centralizing it on the router while easily keeping historical versions of important files |
| RADIUS Server | Provides centralized authentication, authorization, and accounting for wireless network access |
| DNS Server | Help users to find, or translate domain names into IP addresses |
| Download Station | Supported download protocols: BT/HTTP/FTP/NZB/eMule, maximum concurrent download task: 50 |
| Media Server (DLNA / UPnP®) | Provide multimedia streaming service to DLNA certified devices and PS3® / PS4® / Xbox 360® / Xbox One® consoles |

Certifications and Packaging

| | |
|-----------------|--|
| Standards | RoHS Compliant; Wi-Fi certified; compliant with CE, FCC, NCC, BSMI, IC, IMDA, TELEC, JATE, VCCI, KCC, RCM standards |
| Package content | <ul style="list-style-type: none">MR2200ac main unitAC power adapterRJ-45 LAN cableQuick Installation Guide |
| Warranty | 2 years |

*Model specifications are subject to change without notice. Please refer to www.synology.com for the latest information.

- VPN Plus offers one free concurrent account with access to the premium features — WebVPN, Synology SSL VPN, and SSTP. Additional concurrent access requires licenses to be purchased from Synology.
- Site-to-Site VPN License is required to activate this feature. A one-time 30-day trial is available to each VPN Plus supported Synology product. For the maximum number of Site-to-Site VPN tunnels, please refer to the product's specifications.

SYNOLOGY INC.

Synology creates network-attached storage, IP surveillance solutions, and network equipment that transform the way users manage data, conduct surveillance, and manage networks in the cloud era. By taking full advantage of the latest technologies, Synology aims to help users centralize data storage and backup, share files on-the-go, implement professional surveillance solutions, and manage networks in reliable and affordable ways. Synology is committed to delivering products with forward-thinking features and the best in class customer services.

Copyright © 2018, Synology Inc. All rights reserved. Synology, the Synology logo are trademarks or registered trademarks of Synology Inc. Other product and company names mentioned herein may be trademarks of their respective companies. Synology may make changes to specification and product descriptions at anytime, without notice.

MR2200ac-2018-ENU-REV001

Headquarters

Synology Inc. 3F-3, No. 106, Chang An W. Rd., Taipei, Taiwan Tel: +886 2 2552 1814 Fax: +886 2 2552 1824

China

Synology Shanghai
200070, Room 201, No. 511 Tianmu W.
Rd., Jingan Dist. Shanghai,
China

France

Synology France SARL
39 rue Louis Blanc, 92400 Courbevoie,
France
Tel: +33 147 176288

North & South America

Synology America Corp.
3535 Factoria Blvd SE #200 Bellevue,
WA98006, USA
Tel: +1 425 818 1587

United Kingdom

Synology UK Ltd.
Unit 5 Danbury Court, Linford Wood,
Milton Keynes, MK14 6PL, United Kingdom
Tel: +44 1908 048028

Germany

Synology GmbH
Grafenberger Allee 125 40237 Düsseldorf
Deutschland
Tel: +49 211 9666 9666

Japan

Synology Japan Co., Ltd.
1F, No.15, Kanda Konyacho, Chiyoda-ku
Tokyo, 101-0035
Japan